

Operating Instructions & Parts Manual

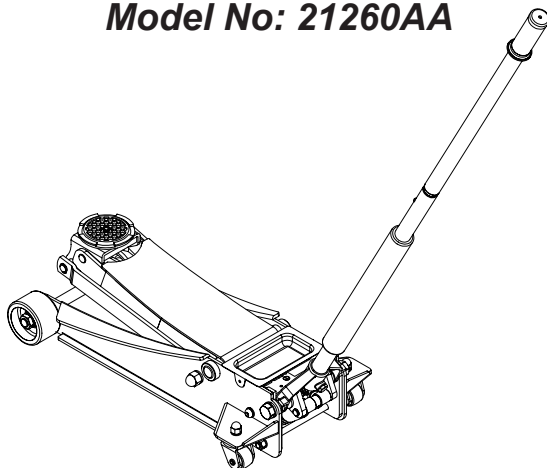
OMEGALIFT™ EQUIPMENT

Stands Behind The Professionals

**WORKING LOAD LIMIT 2600KG
HEAVY DUTY LOW PROFILE
GARAGE SERVICE JACK**

THIS JACK CONFORMS TO MANDATORY STANDARD AS 2615:2016

Model No: 21260AA



READ RULES FOR SAFE OPERATION AND INSTRUCTIONS CAREFULLY



WARNING: THE JACK MUST BE USED ONLY ON HARD LEVEL SURFACES AND BE FREE TO ROLL DURING LIFTING AND LOWERING. DO NOT GET UNDER A VEHICLE THAT IS SUPPORTED BY A TROLLEY JACK - USE THIS HYDRAULIC TROLLEY JACK WITH SUITABLY RATED VEHICLE SUPPORT STANDS.

Imported by:
SHINN FU AUSTRALIA PTY. LTD.
15 Viewtech Place, Rowville 3178 VIC Australia

PRINTED IN CHINA
21260AA-M0_032020

SAFETY INSTRUCTIONS

INSPECTIONS

1. BEFORE EACH USE

Visual inspection should be made before each use of the trolley jack for abnormal conditions such as cracked welds, leaks and damaged, loose, or missing parts.

2. AFTER EACH USE

Trolley jack should be inspected immediately if the lift is believed to have been subjected to an abnormal load or shock. It is recommended that inspection be made by manufacturer's or supplier's authorised repair facility.

3. ANNUAL INSPECTION

Annual inspection of the trolley jack is recommended and is recommended to be made by the manufacturer's or supplier's authorised repair facility to ensure that your trolley jack is in optimum condition.

RECOMMENDATION FOR SAFE USAGE OF THE JACK

1. Consult the vehicle manufacturer's manual prior to the lifting of the vehicle.
2. Conduct a pre-operational check of the equipment.
3. Use the hydraulic trolley jack for lifting and lowering only; the raised vehicle should be supported on suitably rated vehicle support stands.
4. Use the hydraulic trolley jack on a hard level surface and ensure it is free to roll during lifting and lowering.
5. No person should remain in a vehicle that is being lifted.
6. Chock the unlifted wheels of the vehicle.
7. Centrally locate the load on the head cap.
8. Support the vehicle on suitably rated vehicle support stands and remove the hydraulic trolley jack prior to commencement of work on the vehicle.
9. No person should get bodily under a vehicle that is supported only by a hydraulic trolley jack.
10. Make sure that lift point is stable and properly centered on jack saddle.
11. Vehicle should be clear of all passengers. Transmission should be in gear (or park for automation transmission) and the emergency brake should be engaged.
12. Familiarize yourself thoroughly with this owner manual before operation to prevent damage to jack and property, or personal injury.

Modifications: Modifications must not be carried out or accessories added.

SAFETY INSTRUCTIONS

CAUTION BEFORE USE

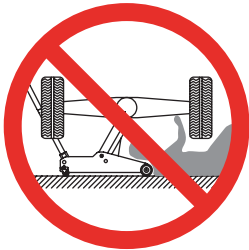
Due to shipment and/or handling air can be trapped in the hydraulic system, which can interfere with the jacks lifting. To release air from the hydraulic system:

- Open release valve by turning the jack handle counterclockwise.
- Remove the oil filler plug from the cylinder.
- Rapidly pump jack handle through several full strokes.
- Replace the oil filler plug into the cylinder.

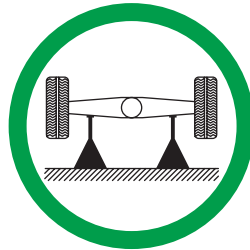


WARNING

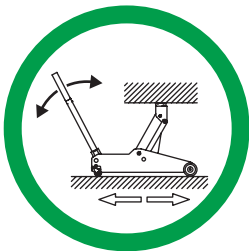
**REFER TO VEHICLE MANUFACTURER'S
MANUAL FOR INSTRUCTIONS**



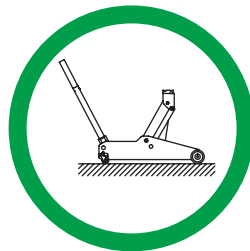
**DEATH OR
INJURY FROM
INCORRECT USE**



**USE TWO
SUPPORT
STANDS**



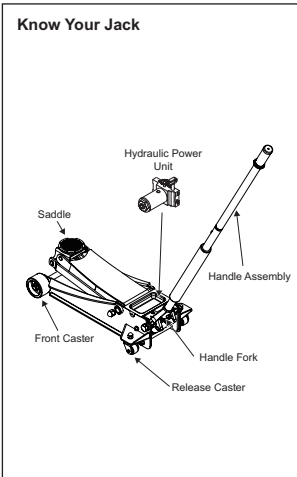
**FREE TO ROLL
DURING LIFTING
AND LOWERING**



**FLAT HARD
LEVEL GROUND**

OPERATIONS

Know Your Jack



TO RAISE:

Place vehicle in park, apply brake and chock wheels with suitable devices.

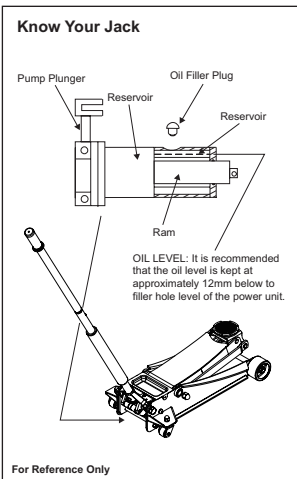
1. Position the jack under the load and close release valve by turning clockwise firmly.
2. Operate manually by pumping with handle until saddle ALMOST contacts with vehicle. Check to see that the saddle is centred and will contact the load lifting point firmly.
3. Continue to pump jack handle until load is raised to desired height and immediately transfer load to appropriately rated jack stands.

TO LOWER:

1. Raise load sufficiently to remove support devices, then slowly turn handle counterclockwise until load begins to lower. Carefully control the rate of descent and avoid shock load created by opening and closing valve quickly. This may result in overloading hydraulic circuit causing damage to jack and personal injury.
2. Remove jack from under load and if necessary, push handle sleeve and saddle down fully to reduce piston and ram exposure to contamination.

MAINTENANCE

Know Your Jack



MAINTAINING OIL LEVEL

Important: When adding or replacing oil, ALWAYS use good grade Hydraulic Jack oil. DO NOT use Hydraulic Brake Fluid, Alcohol, Glycerin, Detergent, Motor Oil or dirty oil. Use of an improper fluid can cause serious internal damage to your jack.

ADDING OIL

- Position the jack on level ground and fully lower the saddle. Remove oil filler plug.
- Turn jack over and drain old oil out through the oil filler plug hole.
- Refill with new oil through the oil filler plug hole. Not allow dirt or other foreign materials to enter the hydraulic system when filling.
- After refilling, remove any air from hydraulic system by opening the release valve and rapidly pumping the jack handle several times.
- Put the oil filler plug back and the jack is ready for use.

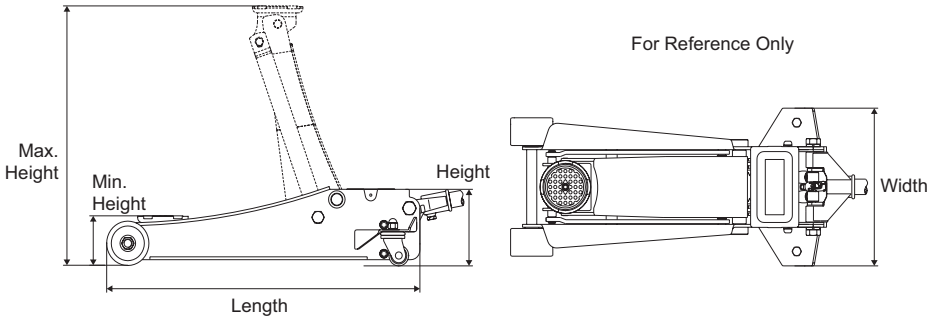
LUBRICATION

- Add lubricating oil to all moving part as needed.

PREVENTING RUST

- Check ram and pump plunger every few months for any signs of rust or corrosion. Clean as needed by wiping with oily cloth.
- When not in use, ALWAYS store jack with saddle and pump plunger lowered all the way down.

SPECIFICATION



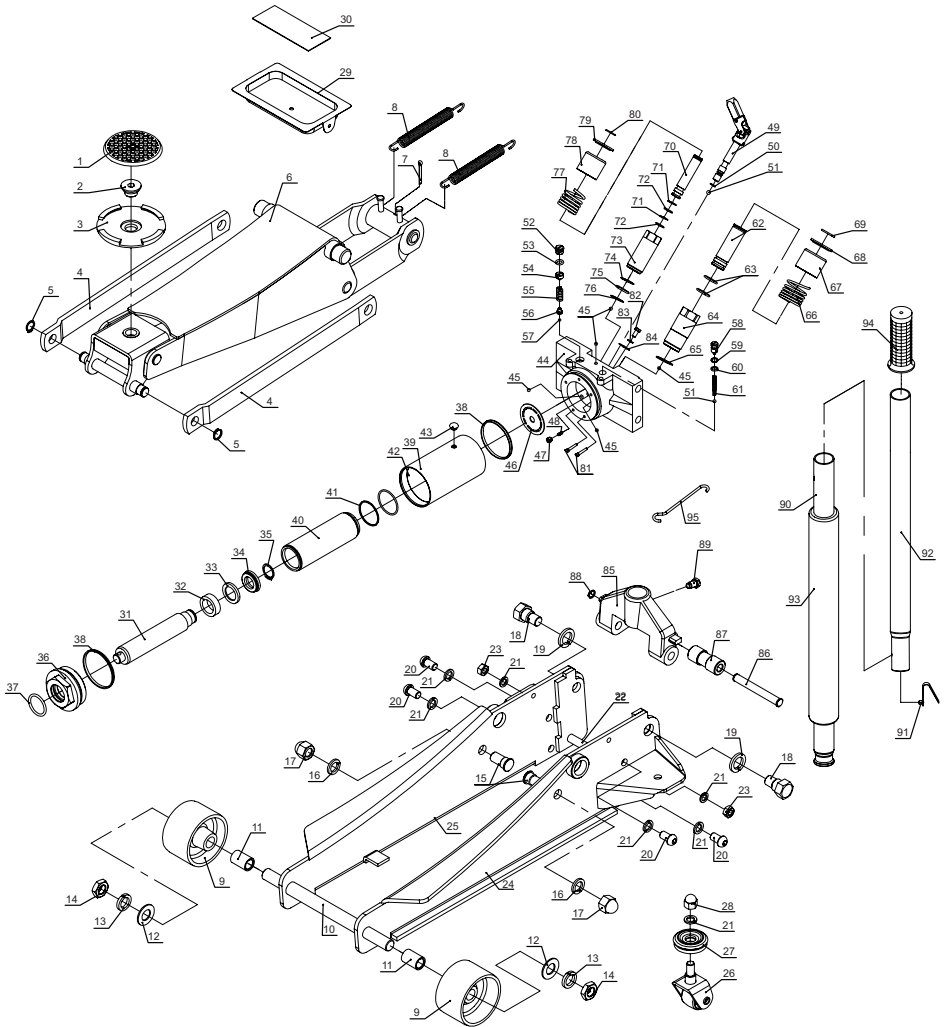
Model No.	Working Load Limit	Height Lowered	Height Raised	Hyd. Lift	Handle Length	Saddle Dia.	Length	Width	Height	Net Weight
	kg	mm	mm	mm	mm	mm	mm	mm	mm	kg
21260AA	2,600	100	533	433	1,320	110	751	360	162	44

TROUBLE SHOOTING

Symptom	Possible Causes & Solutions
Jack will not lift load	<ol style="list-style-type: none"> 1. Release valve not tightly closed. To close or tighten, turn release valve clockwise. 2. Air is in hydraulic system. Release air from System. 3. Oil level is low in jock. Add oil as required. 4. Power unit malfunctioning. Replace the power unit.
Jack will lift load, but not hold	<ol style="list-style-type: none"> 1. Oil Level is low in jack. Add oil as required. 2. Power unit malfunctioning. Replace the power unit.
Jack will not lower completely	<ol style="list-style-type: none"> 1. Oil reservoir is over filled. Drain out some oil. 2. Lubrication of moving parts is necessary.
Poor jack lifting. Pump feels spongy	<ol style="list-style-type: none"> 1. Air is in hydraulic system. Release air from System. 2. Oil Level is low in jack. Add oil as required. 3. Power unit malfunctioning. Replace the power unit.
Jack can not reach maximum height	<ol style="list-style-type: none"> 1. Air is in hydraulic system. Release air from System. 2. Oil level is low in jock. Add oil as required.
Handle raises by itself when jack is under load	<ol style="list-style-type: none"> 1. Air is in hydraulic system. Release air from System.

NOTE: If the above procedures can not remedy the problem, the product shall be taken to a local service centre for further examination.

SPARE PARTS



SPARE PARTS

Item #	Description	Qty
1	Saddle Pad	1
2	Saddle Blot	1
3	Saddle	1
4	Radius Link	2
5	Snap Ring	2
6	Lifting Arm Assembly	1
7	Retainer	1
8	Spring	2
9	Front Wheel	2
10	Front Axle	1
11	Bering Bush	2
12	Washer	2
13	Lock Washer	2
14	Nut	2
15	Radius Link Stud	2
16	Lock Washer	2
17	Cap Nut	2
18	Right Handle Bolt	2
19	Lock Washer	2
20	Cup-head Bolt	4
21	Lock Washer	8
22	Frame Tie Rod	1
23	Nut	2
24	Left Plate Assembly	1
25	Right Plate Assembly	1
26	Bear Caster Assembly	2
27	Bearings	2
28	Cap Nut	2
29	Trestle Table	1
30	Magnetic Rubber Pad	1
31	Ram Plunger	1
32	Bushing Cover	1
33	Back-up Washer	1
34	U-cup Seal	1
35	Snap Ring	1
36	Top Nut	1
37	O-ring	1
38	Wedge Ring	2
39	Reservoir	1
40	Cylinder	1
41	Back-up Washer	1
42	O-ring	1
43	Oil Seal	1
44	Base	1
45	Ball	5
46	Washer	1
47	Throttle Valve	1
48	Spring	1

Item #	Description	Qty
49	Release Valve Assy	1
50	O-ring	1
51	Ball	2
52	Guard Screw	1
53	O-ring	1
54	Screw Safety Valve	1
55	Spring	1
56	Valve	1
57	Ball	1
58	Bolt	1
59	Back-up Washer	1
60	O-ring	1
61	Spring	1
62	Pump Piston	1
63	O-ring	2
64	Pump	1
65	Washer	1
66	Pump Core Rest Spring	1
67	Spring Sleeve	1
68	Spring Stop Sheet	1
69	Snap Ring	1
70	Pump Piston	1
71	Back-up Washer	2
72	O-ring	2
73	Pump	1
74	Back-up Washer	1
75	O-ring	1
76	Washer	1
77	Pump Core Rest Spring	1
78	Spring Sleeve	1
79	Spring Stop Sheet	1
80	Snap Ring	1
81	Filter	2
82	Bolt	1
83	Lock Washer	1
84	Washer	1
85	Handle Base	1
86	Pin	1
87	Roller	1
88	Snap Ring	1
89	Bolt	1
90	Handle-i	1
91	Handle Lock Button	1
92	Handle-II	1
93	Enveronmental Protection Foam	1
94	Handle Grip	1
95	Hook	1

WARRANTY

1. This product is covered by an express warranty for 12 months from the date of purchase by the original purchaser. Subject to the conditions of this warranty Shinn Fu Australia Pty Ltd or its authorised repair agents will replace the product or perform necessary service on the product without charge for parts or labour if the product is found to be faulty within the warranty period.
2. This warranty only applies to products imported by Shinn Fu Australia Pty Ltd and used within Australia. Shinn Fu products imported by other importers are specifically excluded.
3. This warranty only applies if the product has been used under normal conditions and in accordance with the User Manual and that, in the opinion of Shinn Fu Australia Pty Ltd, reasonable care has been taken of the product.
4. This warranty is void if the product has been tampered with or repaired by any unauthorised person or has been modified in any way.
5. If a warranty service is required the purchaser should:
 - Take the product to the nearest Shinn Fu Australia Pty Ltd repair agent or return it to the place of purchase.
 - Provide evidence of proof of purchase and the date of purchase.
 - Provide details of the problem encountered.
6. Shinn Fu Australia Pty Ltd guarantees that spare parts and repair facilities for this product will be available for a period of five years from the date of the last importation of the model of the product. After that period all reasonable efforts will be made to supply spare parts but supply cannot be guaranteed.
7. The purchaser may also have rights under the statutory warranty provisions of the Trade Practices Act 1974 and other legislation and nothing in this express warranty is to be taken to exclude or affect any of those rights.

IF YOU REQUIRE ANY ASSISTANCE REGARDING WARRANTY CONDITIONS PLEASE CONTACT THE SHINN FU AUSTRALIA PTY LTD COMPLIANCE OFFICER ON (03) 9755 8277 OR EMAIL: sales@sfaa.com.au