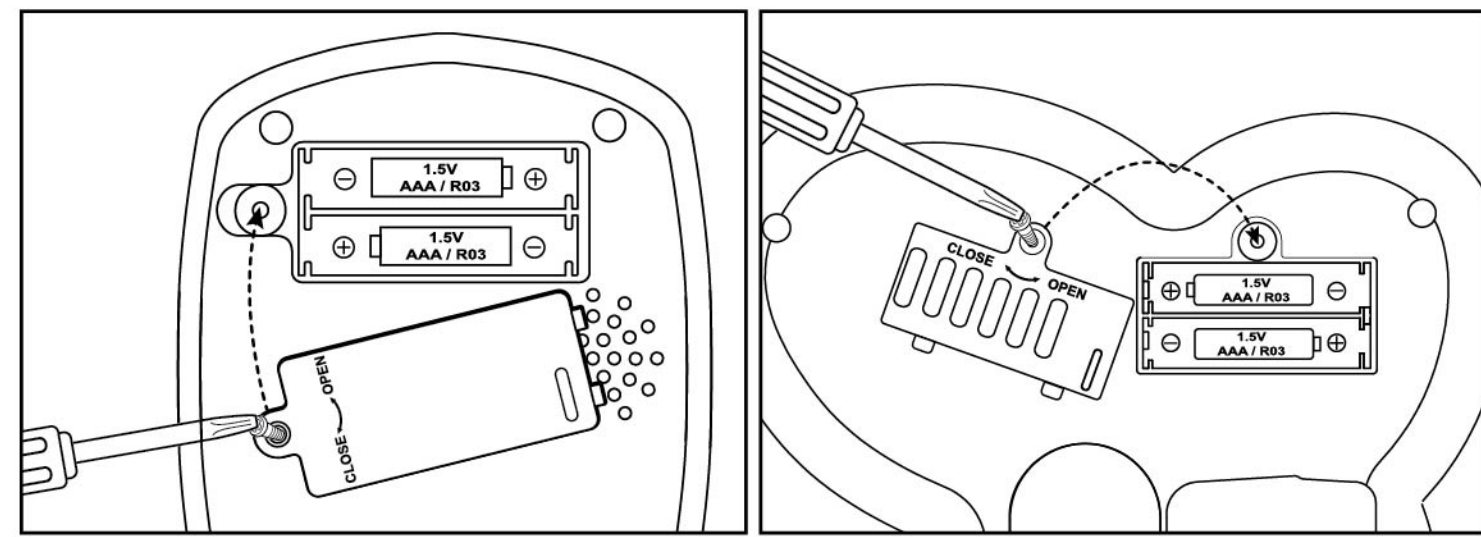


Battery Safety Information



Card Reader: Requires 2 x AAA (R03) batteries (not included).
 Cash Register: Requires 2 x AAA (R03) batteries (not included).

- Battery Instructions**
1. Remove batteries when not in use or discharged.
 2. Do not mix old and new batteries.
 3. Do not use rechargeable batteries.
 4. Do not mix alkaline, standard (carbon-zinc), or rechargeable (nickel-cadmium) batteries.

Replacement of batteries must be done by an adult.
 Dispose of batteries safely.
 Never dispose of batteries in fire, as they may leak and explode.

Questions or Comments

Just Play Toys
 4531 1/2 Ave. S., Suite 100
 Boca Raton, FL 33433, USA
 In the interest of better quality and value, we are constantly improving and updating our products. Consequently, pictures on this package may sometimes vary from the product enclosed.
 Please retain this address for future reference.
 CAUTION: Have an adult remove and dispose of all packaging, ties and fasteners before use.
 Warning: This is a toy only, not to be used with real food.
 Do not sit or place heavy object on it.
 PRINTED IN CHINA

Follow Just Play on:
www.justplaytoys.com
<https://facebook.com/JustPlay>
<https://twitter.com/justplaytoys>
<https://instagram.com/justplaytoys>
<https://pinterest.com/justplaytoys>
 For questions or comments, please call:
1-800-317-3245
 Or visit: www.justplaytoys.com
 100% Satisfaction Guarantee

Disney Junior
MINNIE
Marvelous Market
Instruction Manual **3+**



WARNING:
CHOKING HAZARD-
 Small parts. Not for children under 3 years.
 Cash Register: Requires 2 x AAA (R03) batteries (not included).
 Card Reader: Requires 2 x AAA (R03) batteries (not included).
 Size of Assembled Market: 33.9 inches (86.0cm) High x 30.5 inches (77.5cm) Wide x 17.9 inches (45.4cm) Depth.
 Do not sit or place heavy object on it.
 Adult Assembly Required.

Content List

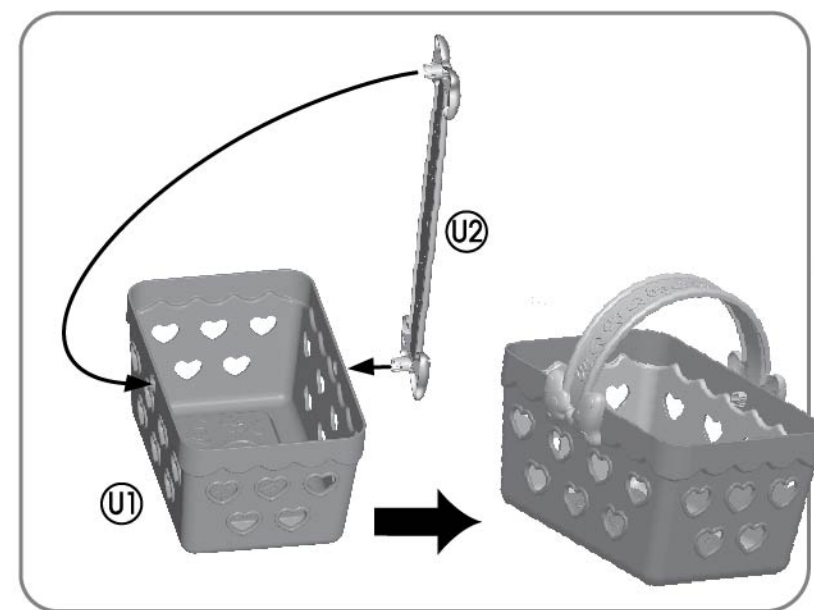


- | | | |
|---|--|--|
| <ul style="list-style-type: none"> A Fridge Left Panel B Fridge Back Panel C Fridge Right Panel D Fridge Upper Shelf E Fridge Lower Shelf F Fridge Front Panel G Market Right Support Panel H Market Front Shelves x2 I Market Rear Support Panel J Market Rear Shelves x2 K Tabletop L Foldable Table M Fridge Door N Fridge Door Handle O Hooks x2 | <ul style="list-style-type: none"> P Tray on Fridge Left Panel Q Cash Register Main Unit R Cash Register Support S Cash Register Bottom T Card Reader Main Unit U Card Reader Support V Sign Post W Pretend Credit Card X Apple Y Banana Z Broccoli AA Grapes AB Bread AC Cans x4 AD Carrot | <ul style="list-style-type: none"> AE Eggs x4 AF Orange AG Cracker Box AH Pasta Box AI Orange Juice Carton AJ Apple Juice Carton AK Snack Boxes x2 AL Milk Carton AM Magazine AN Shopping Basket AO Shopping Basket Handle AP Reusable Shopping Bag AQ Play Money x10 |
|---|--|--|

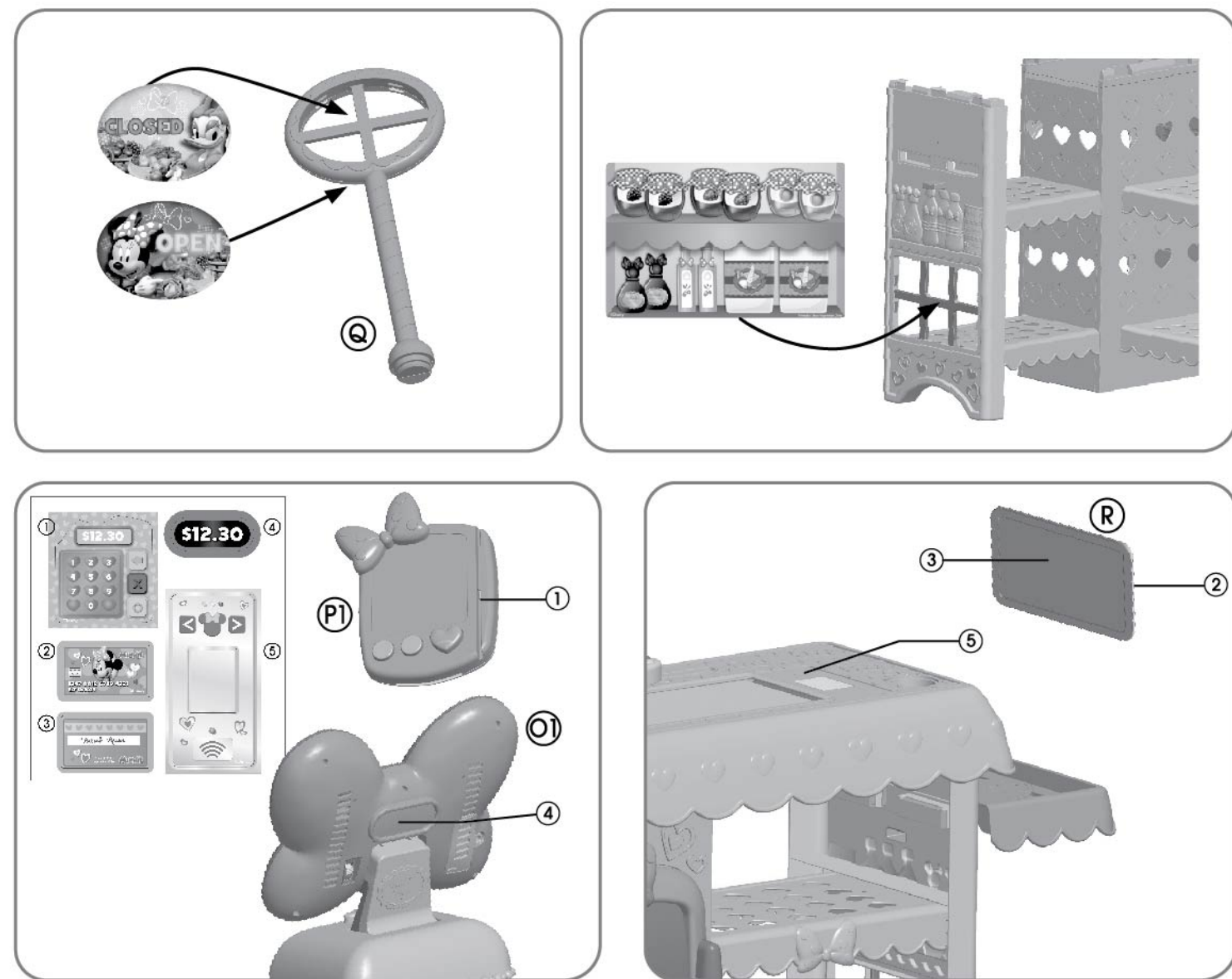
To Play

- 1 Turn on the Cash Register by switching it from "OFF" to "ON" mode.
- 2 Press the buttons on the Cash Register screen to hear Minnie phrases and sound effects.
- 3 Push the button on the Cash Register base to open the cash drawer.
- 4 Press the round buttons on the Card Reader or slide the pretend credit card through the card swipe to hear Minnie phrases and sound effects.
- 5 Insert the pretend credit card into the bottom of the Card Reader. Press the heart button to eject the credit card.
- 6 To move the Conveyor Belt forward, slide the oval button towards the Card Reader. To move the Conveyor Belt further, pull the oval button back and then towards the Card Reader again.

Assembly Instruction



Sticker Sheet and Chip Art



Assembly Instruction

- 1 Attach the back panels (A and B) to the main body.
- 2 Attach the right side panel (C) to the main body.
- 3 Attach the upper shelves (D) to the main body.
- 4 Attach the lower shelves (E) to the main body.
- 5 Attach the front support panels (F) to the main body.
- 6 Attach the rear support panels (G) to the main body.

Assembly Instruction

- 7 Attach the market front shelves (H) to the main body.
- 8 Attach the market rear shelves (I) to the main body.
- 9 Attach the cash register support (J) to the main body.
- 10 Attach the cash register (K) to the support.
- 11 Attach the card reader support (L) to the main body.
- 12 Attach the card reader (M) to the support.
- 13 Attach the market front shelves (N) to the main body.
- 14 Attach the market rear shelves (O) to the main body.
- 15 Attach the cash register support (P) to the main body.
- 16 Attach the cash register (Q) to the support.
- 17 Attach the card reader support (R) to the main body.
- 18 Attach the card reader (S) to the support.

Assembly Instruction

- 13 Attach the market front shelves (N) to the main body.
- 14 Attach the market rear shelves (O) to the main body.
- 15 Attach the cash register support (P) to the main body.
- 16 Attach the cash register (Q) to the support.
- 17 Attach the card reader support (R) to the main body.
- 18 Attach the card reader (S) to the support.